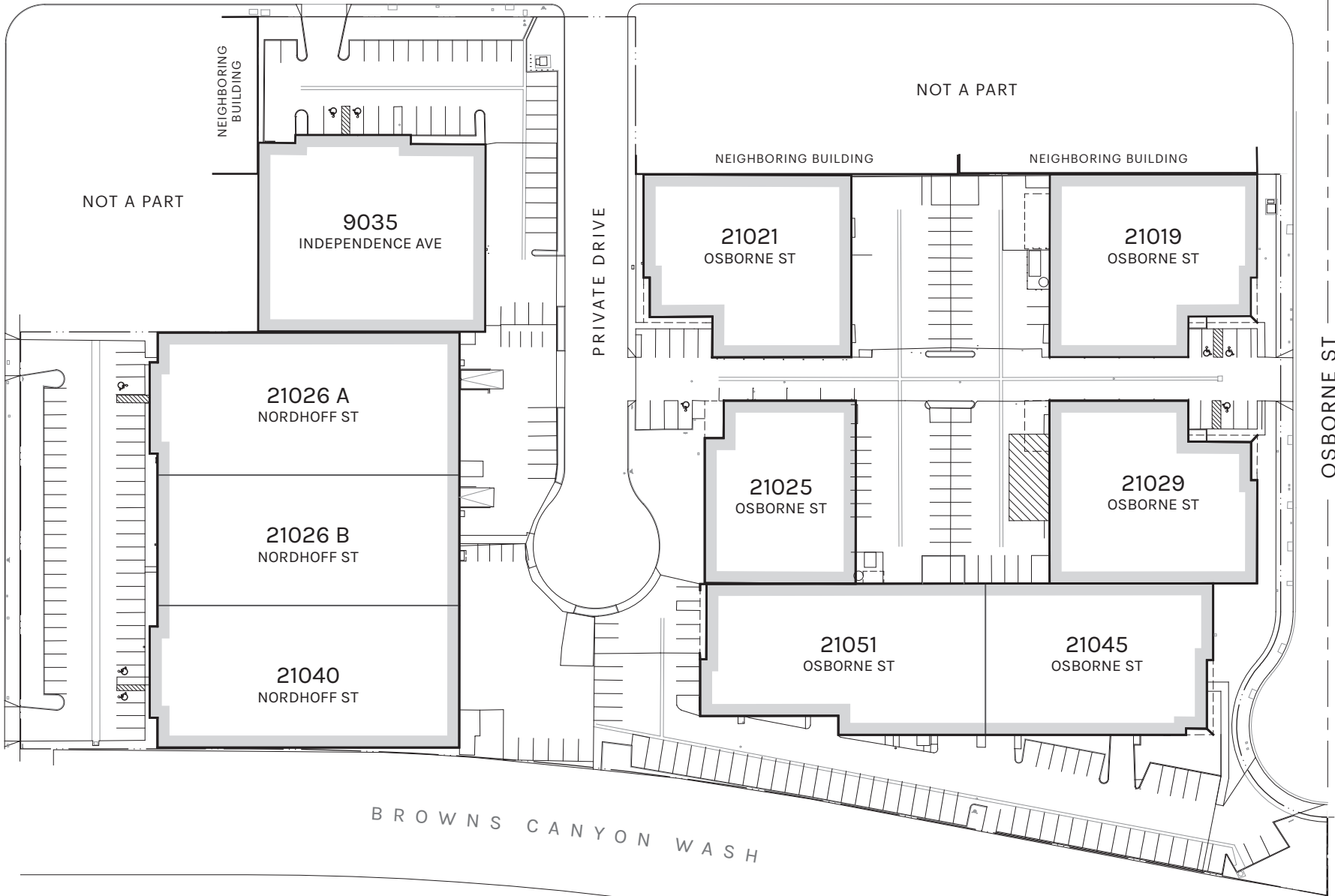


INDEPENDENCE AVE

NORDHOFF ST

OSBORNE ST



NOT TO SCALE
DATE: 11.15.17

21026-21040 NORDHOFF ST • 9035 INDEPENDENCE AVE • 21019-21051 OSBORNE ST | CHATSWORTH

PLAN LAYOUT SUBJECT TO FIELD CONDITIONS & MAY DIFFER FROM PLAN AS SHOWN. ALL INFORMATION PRESENTED ON THIS DRAWING IS PRESUMED TO BE ACCURATE, HOWEVER TENANT SHOULD VERIFY PERTINENT INFORMATION PRIOR TO COMMITTING TO A LEASE.

SITE PLAN

